

# Brassmasters Windows



**Brassmasters**

*Images not to scale*

**Brassmasters range of OO and N scale etched windows** are designed to complement the popular Scalescenes.com range of buildings and scratchbuilding materials. Designed in collaboration with Scalescenes.com, this range of etches will enhance the windows and provide additional details to match the photo-realistic card finishes on these card buildings.

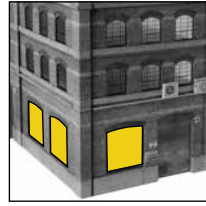
**Scalescenes kit usage**



**A Arched industrial windows**

Additional features: Hinged light and tie bar plates  
OO Window opening size: 40mm(h) x 39mm(w)  
N Window opening size: 21mm(h) x 20mm(w)

 **2 windows per pack**



T026a Factory/Warehouse  
**1 pack for every 2 windows required**

Quantity required



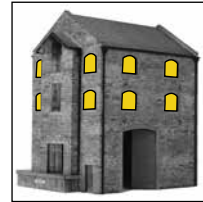
**B Small arched industrial windows**

Additional features: Hinged light and tie bar plates  
OO Window opening size: 19mm(h) x 20mm(w)  
N Window opening size: 10mm(h) x 10.5mm(w)

 **6 windows per pack**



T005a Low Relief High Street Backs  
**1 pack for Facade 5**



T026c Stone Warehouse/Mill  
**2 packs required**

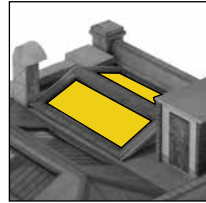
Quantity required



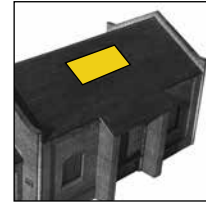
**C Large skylights**

OO Window opening size: 21mm(h) x 56mm(w)  
N Window opening size: 11mm(h) x 29mm(w)

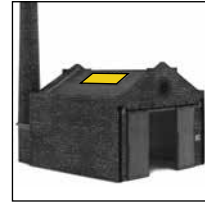
 **2 windows per pack**



T026a Factory/Warehouse  
**1 pack for each two skylights**



R009 Goods Shed  
**1 pack required**



T024b Industrial B - Boilerhouse  
**1 pack required**

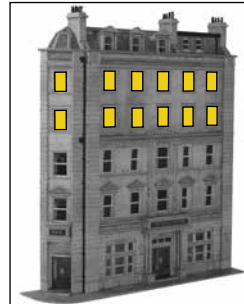
Quantity required



**D Large sash windows**

Additional features: television aerials  
OO Window opening size: 20mm(h) x 14mm(w)  
N Window opening size: 11mm(h) x 7mm(w)

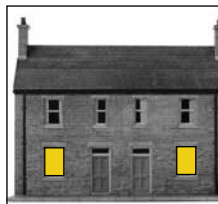
 **6 windows per pack**



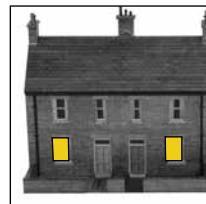
T006c Low Relief Hotel  
**2 packs required**



T005 Low Relief High Street  
**2 packs for Facades 1 and 4**



T008a Low Relief House Fronts and Shops  
**1 pack makes x6 houses**



T022a Terraced Houses  
**1 pack makes x6 houses**



T005a Low Relief High Street Backs  
**1 pack for Facade 5**

Quantity required



**E Large narrow sash windows**

Additional features: Letter boxes and door handles  
OO Window opening size: 20mm(h) x 12mm(w)  
N Window opening size: 11mm(h) x 7mm(w)

 **6 windows per pack**



R003 Small Station Building  
**1 pack required.**



R004 Medium Station Building  
**2 packs for Modules A & B**

Quantity required



**F Medium sash windows**

Additional features: Letter boxes and door handles  
 OO Window opening size: 18mm(h) x 12mm(w)  
 N Window opening size: 9.5mm(h) x 6.5mm(w)



**6 windows per pack**



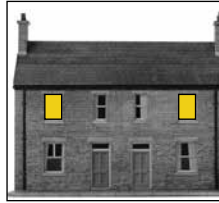
T008 Low Relief House Backs  
**3 packs for each row**



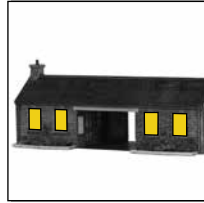
T018a Lock Keepers Cottage  
**2 packs required**



T022c Corner Shops  
**1 pack required**



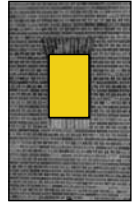
T008a Low Relief House Fronts and Shops  
**1 pack makes x6 houses**



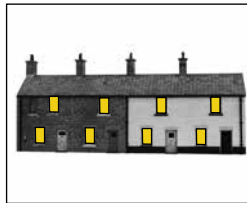
R003b GWR Station and Goods Shed  
**1 pack required**



T022a Terraced Houses  
**2 packs makes x1 two house section**  
**3 packs makes x1 four house row**



Scratchbuilder's yard brick sheets (Arch N)



T019 Row of Cottages  
**2 packs required**



T005 Low Relief High Street  
**3 packs for Facades 1 and 2**



T005a Low Relief High Street Backs  
**2 packs for Facades 1 and 4**

Quantity required

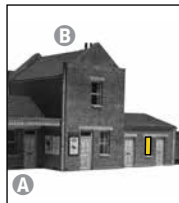


**G Small sash windows**

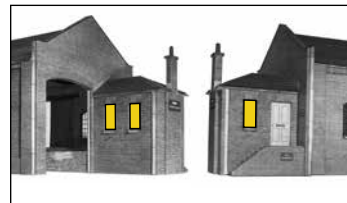
Additional features: Letter boxes, door handles and skylights  
 OO Window opening size: 18mm(h) x 9mm(w)  
 N Window opening size: 9.5mm(h) x 4.5mm(w)



**6 windows per pack**



R004 Medium Station Building  
**1 pack for Module C**



R009 Goods Shed  
**1 pack required**



T018a Lock Keepers Cottage  
**1 pack required**



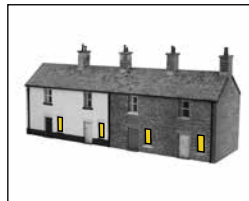
T008 Low Relief House Backs  
**2 packs for each row**



T005a Low Relief High Street Backs  
**1 pack for Facade 2**



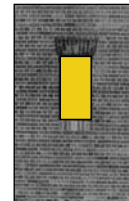
T008a Low Relief House Fronts and Shops  
**1 pack makes x6 houses**



T019 Row of Cottages  
**1 pack required**



T022a Terraced Houses  
**1 pack makes x1 two house section**  
**2 packs makes x1 four house row**



Scratchbuilder's yard brick sheets (Arch O)

Quantity required



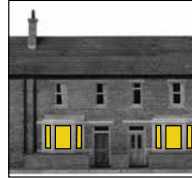
**H Bay windows**

OO Window opening sizes:  
Centre: 19mm(h) x 13mm(w)  
Side: 19mm(h) x 8mm(w)  
N Window opening sizes:  
Centre: 10mm(h) x 6.5mm(w)  
Side: 10mm(h) x 4mm(w)

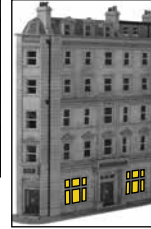
**4 windows per pack**



T022a Terraced Houses  
**1 pack makes x1 four house row**



T008a Low Relief House Fronts and Shops  
**1 pack makes four houses**



T006c Low Relief Hotel  
**1 pack required (used flat rather than in bay configuration)**



T036 School  
**1 pack required (used flat rather than in bay configuration)**

Quantity required



**I Old-style shop windows and doors**



**J Modern-style shop windows and doors**

OO Window opening sizes: 23mm(h) x 31mm(w)  
OO Door opening sizes: Double: 33mm(h) x 17mm(w)  
Single: 33mm(h) x 14mm(w)  
N Window opening sizes: 12.5mm(h) x 16mm(w)  
N Door opening sizes: Double: 17.5mm(h) x 9mm(w)  
Single: 17.5mm(h) x 7.5mm(w)

**2 windows, 1 single door and 1 double door per pack**



T022c Corner Shops  
**1 pack makes one Shopfront 1 or two Shopfronts 2**



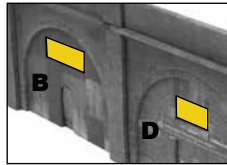
R020 Shops Under Arches  
**1 pack makes x2 shopfronts**

Quantity required

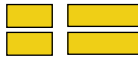


**K Industrial windows**

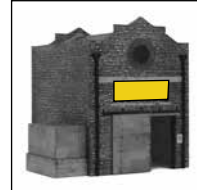
Additional features:  
Barrel bolts with padlocks  
OO Window opening sizes:  
Large: 17mm(h) x 47mm(w)  
Small: 17mm(h) x 32mm(w)  
N Window opening sizes:  
Large: 9mm(h) x 24mm(w)  
Small: 9mm(h) x 16.5mm(w)



R019 Workshops Under Arches  
**1 pack makes x2 Infills B and x2 Infills D**



**4 windows per pack**



T024a Industrial A - Warehouse  
T024c Industrial C - Workshop  
**1 pack required**

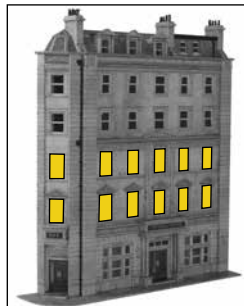
Quantity required



**L Large sash windows (eight small panes)**

OO Window opening sizes: 24mm(h) x 14mm(w)  
N Window opening sizes: 12.5mm(h) x 7.5mm(w)

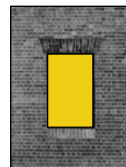
**3 windows per pack**



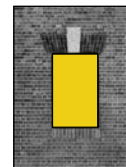
T006c Low Relief Hotel  
**4 packs required**



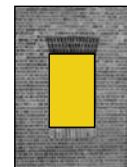
T005 Low Relief High Street  
**2 packs for Facade 5**



(Arch K)



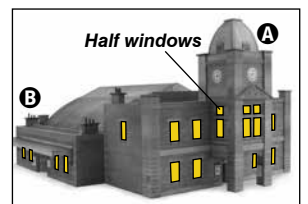
(Arch L)



(Arch M)

Scratchbuilder's yard brick sheets

Quantity required



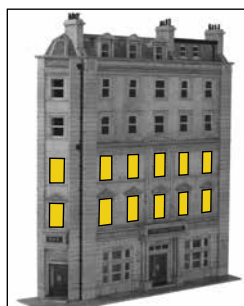
R005 Large Station Building  
**7 packs for Module A**  
**2 packs for Module B**  
**9 packs for Modules A & B**



**M Large sash windows (four large panes)**

OO Window opening sizes: 24mm(h) x 14mm(w)  
N Window opening sizes: 12.5mm(h) x 7.5mm(w)

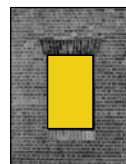
**3 windows per pack**



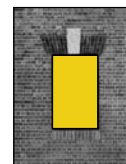
T006c Low Relief Hotel  
**4 packs required**



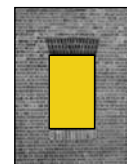
T005 Low Relief High Street  
**2 packs for Facade 5**



(Arch K)



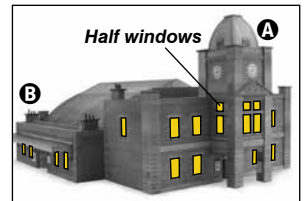
(Arch L)



(Arch M)

Scratchbuilder's yard brick sheets

Quantity required



R005 Large Station Building  
**7 packs for Module A**  
**2 packs for Module B**  
**9 packs for Modules A & B**

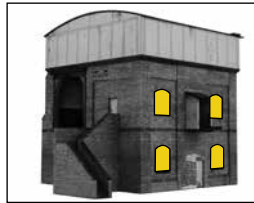


**N** Ornate arched windows

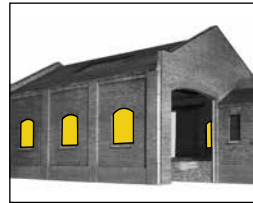
Additional features: hinged light  
 OO Window opening sizes: 24mm(h) x 20mm(w)  
 N Window opening sizes: 12.5mm(h) x 10mm(w)



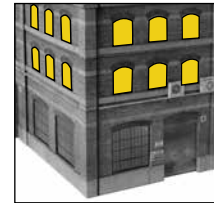
4 windows per pack



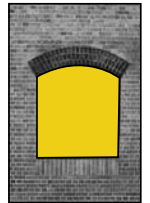
R026 Coaling Stage  
1 pack required



R009 Goods Shed  
2 packs required



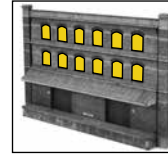
T026a Factory/Warehouse  
3 packs make two wall sections



Arch H, I, and J  
Scratchbuilder's yard brick sheets

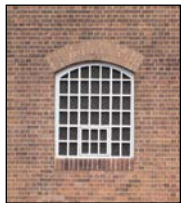


T036 School  
1 pack required



T027 Low Relief Factory  
3 packs required

Quantity required

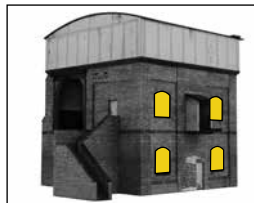


**O** Arched industrial windows

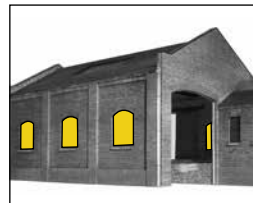
Additional features: hinged light  
 OO Window opening sizes: 24mm(h) x 20mm(w)  
 N Window opening sizes: 12.5mm(h) x 10mm(w)



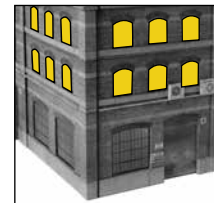
4 windows per pack



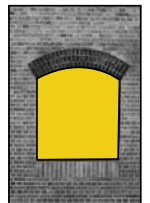
R026 Coaling Stage  
1 pack required



R009 Goods Shed  
2 packs required



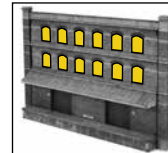
T026a Factory/Warehouse  
3 packs make two wall sections



Arch H, I, and J  
Scratchbuilder's yard brick sheets

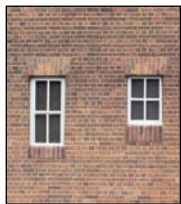


T036 School  
1 pack required



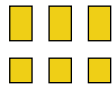
T027 Low Relief Factory  
3 packs required

Quantity required



**P** Three sash and three simple windows

OO Window opening sizes: 18mm(h) x 10mm(w)  
 N Window opening sizes: 9.5mm(h) x 5mm(w)  
 OO Window opening sizes: 13mm(h) x 10mm(w)  
 N Window opening sizes: 6.5mm(h) x 5mm(w)



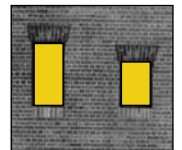
6 windows per pack



T006c Low Relief Hotel  
1 pack required



T005 Low Relief High Street  
3 packs for Facade 4 and 5



Scratchbuilder's yard brick sheets (Arch O)

Quantity required

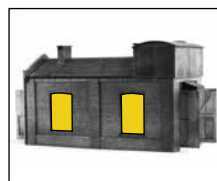


**Q** Engine shed windows

Additional features: hinged light  
 OO Window opening sizes: 43mm(h) x 29mm(w)  
 N Window opening sizes: 22mm(h) x 15.5mm(w)



4 windows per pack



R021a Small Engine Shed  
1 pack makes two walls

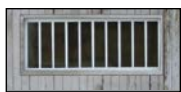


R021b North Light Engine Shed  
1 pack for each two wall section



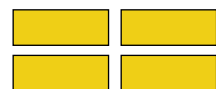
R022b Gable Roof Engine Shed  
1 pack for each two wall section

Quantity required

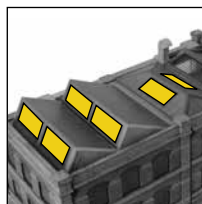


**R** Engine shed roof lights

OO Window opening sizes: 16mm(h) x 44mm(w)  
 N Window opening sizes: 9.5mm(h) x 23mm(w)



4 windows per pack



T026a Factory/Warehouse  
1 pack for each four skylights



R021b North Light Engine Shed  
1 pack for each four skylights



R022b Gable Roof Engine Shed  
1 pack for each four skylights

Quantity required



**S Signalbox windows**

Additional features:  
Handrails and Lever frame  
OO Window opening sizes:  
17mm(h) x 18.5mm(w)  
17mm(h) x 71mm(w)  
17mm(h) x 36mm(w)  
13mm(h) x 9.5mm(w)

**1 set per pack**

N Window opening sizes:  
9mm(h) x 9.5mm(w)  
9mm(h) x 37mm(w)  
9mm(h) x 18.5mm(w)  
6.5mm(h) x 4.5mm(w)



R010 Signalbox  
**1 pack for each kit**

Quantity required



**U Access ladders**

Additional features:  
Top handrails, support brackets and chequer-plate.  
OO sizes:  
160mm(h) x 5.5mm(w)

**2 ladders per pack**



R025a Water Tower  
**1 pack for each kit (only 1 ladder required)**



R021a Small Engine Shed  
**1 pack for each kit (only 1 ladder required)**



R026 Coaling Stage  
**1 pack for each kit (only 1 ladder required)**

Quantity required



**V Safety cages to fit Access ladders U**

OO sizes:  
130mm(h) x 10mm (dia. approx.)

**1 safety cage per pack**  
**PLEASE NOTE: Does not include ladder - see pack U above**



T009 Modern Industrial Building  
**As required**



T015 Storage Tanks  
**As required**



T032 Gantry Crane  
**1 pack (plus Access Ladder pack U)**

Quantity required

**T Safety cages and Access ladders (N scale version only)**

Additional features:  
Top handrails and support brackets.  
82mm(h) x 3mm(w) LONG  
25mm(h) x 3mm(w) SHORT

**4 SHORT ladders per pack**  
**2 LONG ladders per pack**  
**2 safety cages per pack**

Quantity required

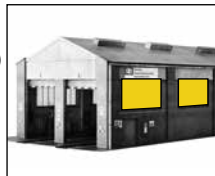


**W Diesel depot windows**

OO Window opening sizes: 31mm(h) x 61mm(w)  
N Window opening sizes: 16mm(h) x 31mm(w)



**2 windows per pack**



R023a Diesel Depot  
**1 pack makes one two window wall section**

Quantity required



**X Small semi circular windows**

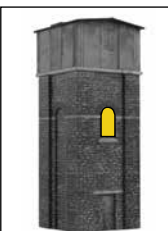
OO Window opening sizes: 24mm(h) x 14mm(w)  
N Window opening sizes: 12mm(h) x 7mm(w)



**3 windows per pack**



R025a Water Tower  
**1 pack required**



T024d Industrial D – Water Tower  
**1 pack required**



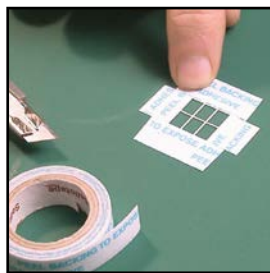
Scratchbuilder's yard brick sheets (Arch G)

Quantity required

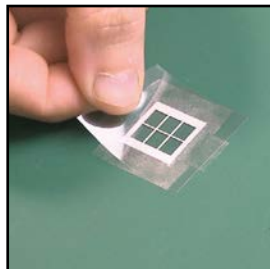
## Installation guide

- Modelling knife or scalpel [With a sharp blade!]
- Thin double sided tape
- Thin clear film or acetate [OHP film or packaging windows]
- Steel ruler
- Jewellers snips or scissors

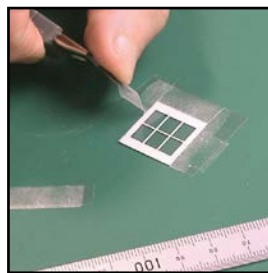
Spray paint the windows (both sides if visible on the finished model) on the fret. White aerosol model primer works well.



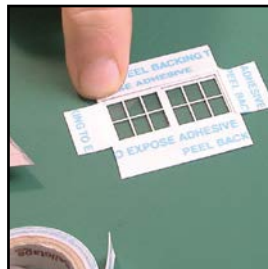
Place the window **front side down** and apply strips of double sided tape around the outside edges.



Remove the tape backing strip and carefully position a suitable piece of clear film over the window.



With a sharp blade carefully cut away the excess film and double sided tape.



Test fit the window into building. Place the window **front side up** and apply strips of double sided tape around the outside edges. Trim away the excess tape.

Position the window into structure.

**Assembly tip** → Test fit and trim the hinged lights if required. A clear glazing adhesive such as 'Glue N Glaze' can be used to position these panels.

To model the hinged lights open saw a diagonal cut in the edge of a piece of MDF with a piecing saw to hold the hinged section. This allows you hold the section steady and position the main window without burning your fingers.

## Scalescenes kit

## Brassmasters code

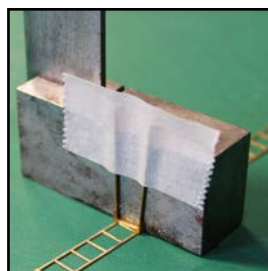
|  |                                 |                  |
|--|---------------------------------|------------------|
| R003                                       | Small Station Building          | <b>E</b>         |
| R003b                                      | GWR Station and Goods Shed      | <b>F</b>         |
| R004                                       | Medium Station Building         | <b>E G</b>       |
| R005                                       | Large Station Building          | <b>L M</b>       |
| R009                                       | Goods Shed                      | <b>C G N O</b>   |
| R010                                       | Signalbox                       | <b>S</b>         |
| R019                                       | Workshops Under Arches          | <b>K</b>         |
| R020                                       | Shops Under Arches              | <b>I J</b>       |
| R021                                       | North Light Engine Shed         | <b>Q R</b>       |
| R021a                                      | Small Engine Shed               | <b>Q U</b>       |
| R022                                       | Gable Roof Engine Shed          | <b>Q R</b>       |
| R023a                                      | Diesel Depot                    | <b>W</b>         |
| R025a                                      | Water Tower                     | <b>U X</b>       |
| R026                                       | Coaling Stage                   | <b>N O U</b>     |
| T005                                       | Low Relief High Street          | <b>D F L M P</b> |
| T005a                                      | Low Relief High Street Backs    | <b>F G D B</b>   |
| T006c                                      | Low Relief Hotel                | <b>D H L M P</b> |
| T009                                       | Modern Industrial Building      | <b>U V</b>       |
| T008                                       | Low Relief House Backs          | <b>F G</b>       |
| T008a                                      | Low Relief House Fronts & Shops | <b>D F G H</b>   |
| T015                                       | Storage Tanks                   | <b>U V</b>       |
| T018                                       | Lock Keepers Cottage            | <b>F G</b>       |
| T019                                       | Row of Cottages                 | <b>F G</b>       |
| T022a                                      | Terraced Houses                 | <b>D F G H</b>   |
| T022c                                      | Corner Shops                    | <b>D E F I J</b> |
| T024a                                      | Industrial A - Warehouse        | <b>K</b>         |
| T024b                                      | Industrial B - Boilerhouse      | <b>C</b>         |
| T024c                                      | Industrial C - Workshop         | <b>K</b>         |
| T024d                                      | Industrial D - Water Tower      | <b>U X</b>       |
| T026a                                      | Factory/Warehouse               | <b>A N O C R</b> |
| T026c                                      | Stone Warehouse/Mill            | <b>B</b>         |
| T027                                       | Low Relief Factory              | <b>N O</b>       |
| T032                                       | Gantry Crane                    | <b>U V</b>       |
| T036                                       | School                          | <b>H N O</b>     |
| Scratchbuilder's yard brick sheet (Arch G) | <b>X</b>                        |                  |
| Scratchbuilder's yard brick sheet (Arch H) | <b>N O</b>                      |                  |
| Scratchbuilder's yard brick sheet (Arch I) | <b>N O</b>                      |                  |
| Scratchbuilder's yard brick sheet (Arch J) | <b>N O</b>                      |                  |
| Scratchbuilder's yard brick sheet (Arch K) | <b>L M</b>                      |                  |
| Scratchbuilder's yard brick sheet (Arch L) | <b>L M</b>                      |                  |
| Scratchbuilder's yard brick sheet (Arch M) | <b>L M</b>                      |                  |
| Scratchbuilder's yard brick sheet (Arch N) | <b>F</b>                        |                  |
| Scratchbuilder's yard brick sheet (Arch N) | <b>F</b>                        |                  |
| Scratchbuilder's yard brick sheet (Arch O) | <b>G</b>                        |                  |



Ensure that you don't apply the tape too far toward the centre of the windows otherwise it may be visible when the windows are in place.

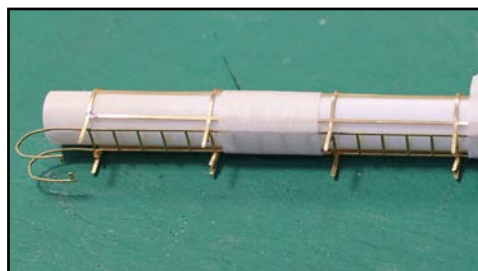


A free 'grime-covered' window sheet designed to be printed on to inkjet or laser compatible film and placed behind the etched industrial windows is available here: [www.scalescenes.com/scratchbuilders-yard](http://www.scalescenes.com/scratchbuilders-yard)



### Adding the support brackets to the Access Ladders

To hold the support brackets in place whilst soldering or gluing, lightly tape to the side of an small engineers square or block.



### Adding the Safety Cage to the Access Ladders

Gently curve the cage around a length of 10mm diameter rod or tube. (approx. 5mm in N scale).

Lightly tape the ladder into position during soldering or gluing.

**ORDER FORM ON NEXT PAGE** →

# Brassmasters Windows



## Order form

Name \_\_\_\_\_

Address \_\_\_\_\_

Phone \_\_\_\_\_

Email \_\_\_\_\_

| Item  | Please tick scale: <input type="checkbox"/> OO <input type="checkbox"/> N | Quantity | Sub-total |
|---|---|----------|-----------|
| <b>A</b> Two large arched industrial windows          | OO £3.00 N £1.00  |          |           |
| <b>B</b> Six small arched industrial windows          | OO £3.00 N £1.00  |          |           |
| <b>C</b> Two large skylights                          | OO £2.50 N 75p  |          |           |
| <b>D</b> Six large sash windows                       | OO £3.00 N £1.00  |          |           |
| <b>E</b> Six large narrow sash windows                | OO £3.00 N £1.00  |          |           |
| <b>F</b> Six medium sash windows                      | OO £3.00 N £1.00  |          |           |
| <b>G</b> Six small sash windows                       | OO £3.00 N £1.00  |          |           |
| <b>H</b> Two bay windows                              | OO £3.00 N £1.00  |          |           |
| <b>I</b> Old-style shop windows and doors             | OO £3.00 N £1.00  |          |           |
| <b>J</b> Modern-style shop windows and doors          | OO £3.00 N £1.00  |          |           |
| <b>K</b> Four industrial windows                      | OO £3.00 N £1.00  |          |           |
| <b>L</b> Three large sash windows (eight small panes) | OO £2.50 N 75p  |          |           |
| <b>M</b> Three large sash windows (four large panes)  | OO £2.50 N 75p  |          |           |
| <b>N</b> Four ornate arched windows                   | OO £3.00 N £1.00  |          |           |
| <b>O</b> Four arched industrial windows               | OO £3.00 N £1.00  |          |           |
| <b>P</b> Three sash and three simple windows          | OO £2.50 N 75p  |          |           |
| <b>Q</b> Four engine shed windows                     | OO £5.00 N £1.50  |          |           |
| <b>R</b> Four engine shed roof lights                 | OO £5.00 N £1.50  |          |           |
| <b>S</b> Signalbox windows, handrails and levers      | OO £6.50 N £2.50  |          |           |
| <b>T</b> N scale Access Ladders and Safety Cages      | N/A N £4.00   |          |           |
| <b>U</b> Access Ladders                               | OO £6.00 N/A  |          |           |
| <b>V</b> Safety Cages to fit Access Ladders           | OO £4.00 N/A  |          |           |
| <b>W</b> Diesel Depot windows                         | OO £6.50 N £3.00  |          |           |
| <b>X</b> Small Semi Circular windows                  | OO £3.00 N £1.25  |          |           |

Sub-total

Postage

**Total**

### Availability

All products are available direct by mail order or from our stand at selected exhibitions.

### Payment

Cash, postal order or cheque with order. Unfortunately, we are unable to accept credit cards or foreign currency or non-Sterling cheques.

Please make your postal orders/cheques payable to BRASSMASTERS.

For overseas customers only we can make special arrangements to take payment via Paypal—please email us to discuss.

### Delivery

Whilst every effort will be made to supply ex-stock, we will notify you if we cannot deliver your order within twenty-eight days. Please bear in mind that this is a part-time hobby business for us and that we only collect our post once each week. We also have to wait up to 14 days to ensure cheques are cleared and that this is notified to us. Therefore, on some occasions, there may be a delay of 3/4 weeks between your letter, the cashing of your cheque and the despatch of your order. For those with email please quote your email address when you order and we will advise you on its progress at each stage.

### Postage and packing

|                        |           |
|------------------------|-----------|
| Orders up to £20       | add £1.50 |
| Orders from £20 to £45 | add £2.50 |
| Orders over £45 to £95 | add £4.00 |
| Orders over £95        | add £8.00 |
| Orders over £250       | post free |

Overseas customers please email us for a price

### Faulty goods and shortages

We aim to despatch goods in perfect condition but occasionally a sub-standard item may slip through our quality control system. If you receive goods which are deficient in this way please return the faulty item or detail the shortage together with proof of purchase. We will replace the item and refund your postage provided you notify us within 30 days of purchase.

### Prices and specification

We aim to maintain prices between each issue of our catalogue but occasionally our suppliers may increase the prices charged to us. We reserve the right to amend any of our prices at the date of despatch. We also reserve the right to amend the specification of our products at any time.

### VAT

We are not registered for VAT and therefore all prices are net of VAT. Overseas customers will not therefore be able to reclaim VAT.

### Please send order form and payment to:

Brassmasters  
PO Box 1137  
Sutton Coldfield  
West Midlands B76 1FU

### Enquires:

[sales@brassmasters.co.uk](mailto:sales@brassmasters.co.uk)



# Brassmasters

[www.brassmasters.co.uk](http://www.brassmasters.co.uk)

[www.scalescenes.com](http://www.scalescenes.com)

© scalescenes.com & Brassmasters 2018